



Version 6.0

Upgrade Guide

*Copyright © 2011 Manufacturing Information Systems, Inc.
4 Maxham Meadow Way
P.O. Box 795
Woodstock, Vermont 05091*

MISys and the MISys logo are registered trademarks of Manufacturing Information Systems, Inc.

Table Of Contents

Table Of Contents.....	2
Installation Overview.....	3
Single PC Deployment.....	3
Company Intranet or Internet Deployment.....	3
Custom Deployment.....	3
Upgrading From MISys Version 5.0.....	3
Record Your Current Server Connection Parameters.....	3
Back Up Your MISys Manufacturing Data.....	3
Download MISys Manufacturing Version 6.0.....	3
Install MISys Manufacturing Version 6.0.....	3
Re-establish the MISys Manufacturing Client Connection.....	5
Test the MISys Manufacturing Client Connection.....	5
Re-establish the MISys Manufacturing Server Administration Connection.....	5
Test the MISys Manufacturing Administration Console Connection.....	5
Check the Integrity of Your Converted Data.....	6
Requesting Installation Assistance.....	6

Installation Overview

The MISys Manufacturing program actually consists of four separate components:

1. MISys Client
2. MISys Server
3. MISys Server Administration Console
4. Microsoft SQL Server Express Edition

Depending on the deployment options you choose, these components may be installed together or separately.

For Installations outside of North America: Microsoft SQL Express Edition is designed for the North American region computing environment only. If you intend to use the MISys Manufacturing System outside North America, we require that you use your own installed copy of Microsoft SQL Server 2005 or later.

Single PC Deployment

If you wish to deploy the MISys Manufacturing System on a single computer, the installation program will install the required components on your computer at the same time.

Company Intranet or Internet Deployment

If you wish to deploy MISys Manufacturing on a company intranet/LAN (or over the Internet) with the MISys Manufacturing programs and data residing on a central server, the installation program will install the required components with their default settings on the server.

Custom Deployment

If you wish to deploy MISys Manufacturing on computers functioning as client workstations, or on the server with custom settings, the installation program will allow you to pick and choose the components you wish to install on any given computer.

Upgrading From MISys Version 5.0

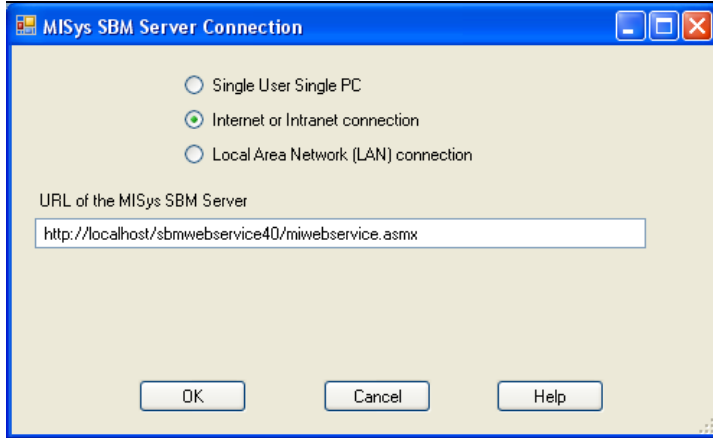
Follow these instructions if you already have MISys version 5.0 installed and are ready to upgrade to version 5.0. In this process, you can review the available deployment option you have chosen in the past and decide whether it is still the best option for you.

Record Your Current Server Connection Parameters

Important: Before you install any new software make sure you record the MISys Client's connection to the MISys Server. You may need this information in the process of installing MISys Manufacturing version 6.0.

Double-click the MISys Client icon and the Client Login window will open.

From the MISys Client Login window, click **Edit | Server Connection** and the following window will open:



Make a careful note of the information you see in this window. You will need it again when installing MISys Manufacturing version 6.0.

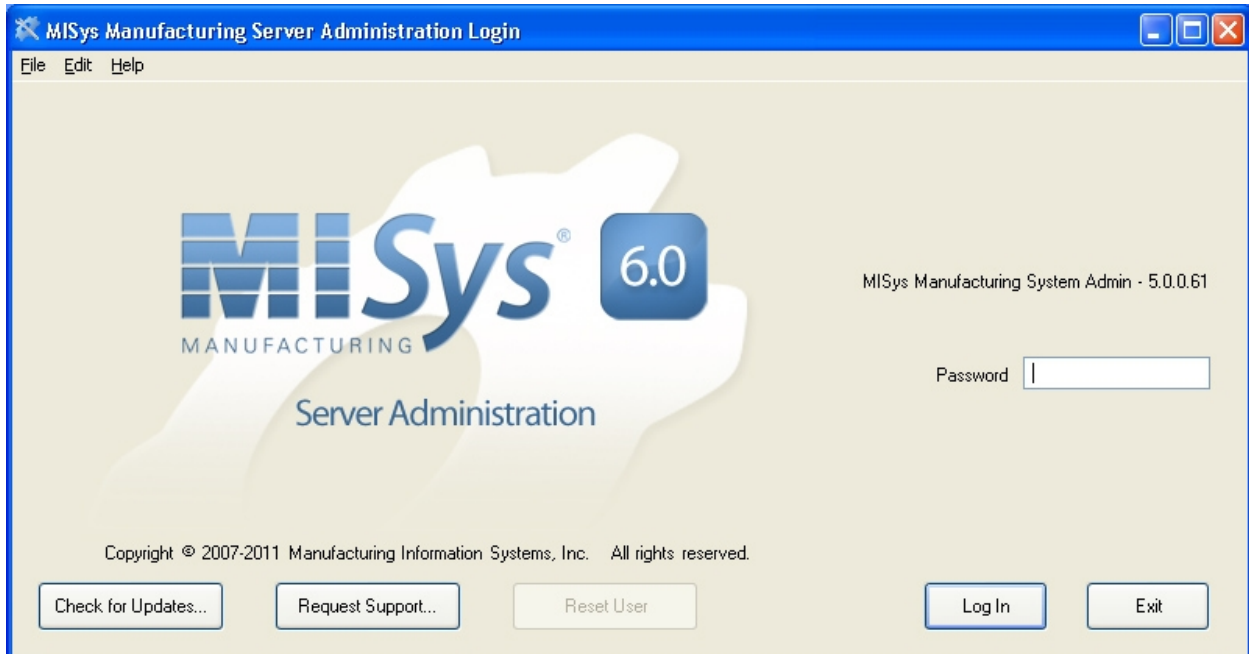
If the MISys server is located on a different computer accessed through the Internet or your company intranet, make a note of the URL of the MISys Server (<http://localhost/>).

When you have recorded this information, click the **Cancel** button to return to the Login window, then click the **Exit** button to close the Login window.

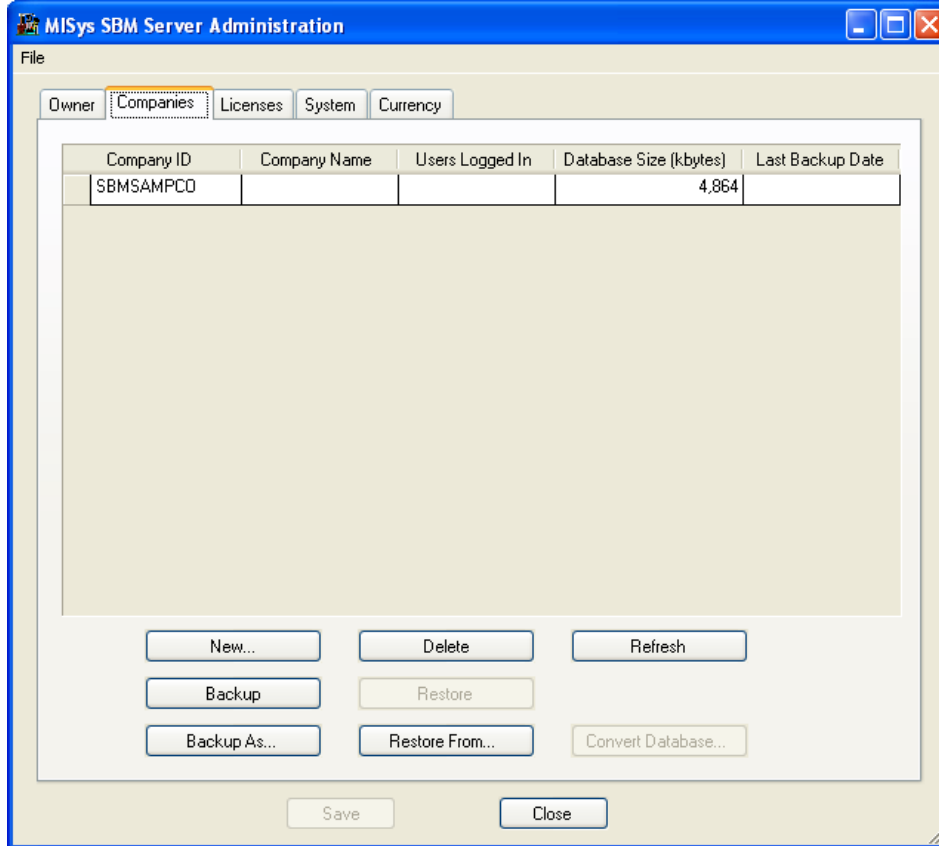
Back Up Your MISys Manufacturing Data

Before proceeding with the upgrade of your MISys Manufacturing System, make sure you have a current backup of your data.

On the computer functioning as the MISys Server, double-click the MISys Server Administration icon and the window will open as follows:



Enter the password which, unless you change it, is "**password**", then click the **Log In** button. When the Server Administration window opens, navigate to the **Companies** tab.



Click to select the Company database you wish to back up, then click the **Backup** button. A quick backup is made to the Backup Folder specified on the **System** tab. Click **OK** to acknowledge the completion of the backup.



If you would rather specify a target folder or filename other than that specified on the **System** tab, click the **Backup As...** button. This will take you to the familiar Windows "Save As..." dialog where you can enter a file name and location.

Download MISys Manufacturing Version 6.0

Download the MISys Manufacturing v6.0 installation package from the MISys Web Server at:

<http://www.misysinc.com/support/downloads/misysmfg.exe>

and copy it to your Windows Desktop or other easily-accessible location.



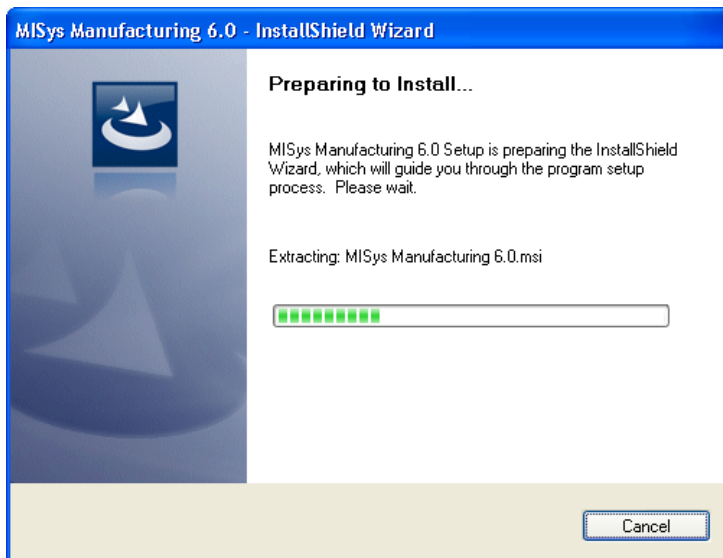
Important: When you are given the opportunity to start downloading the MISys Manufacturing Installation Package, make sure you select the **Save** option and save the package to your Windows Desktop or other equally identifiable folder. **DO NOT** select the Run option.

Install MISys Manufacturing Version 6.0

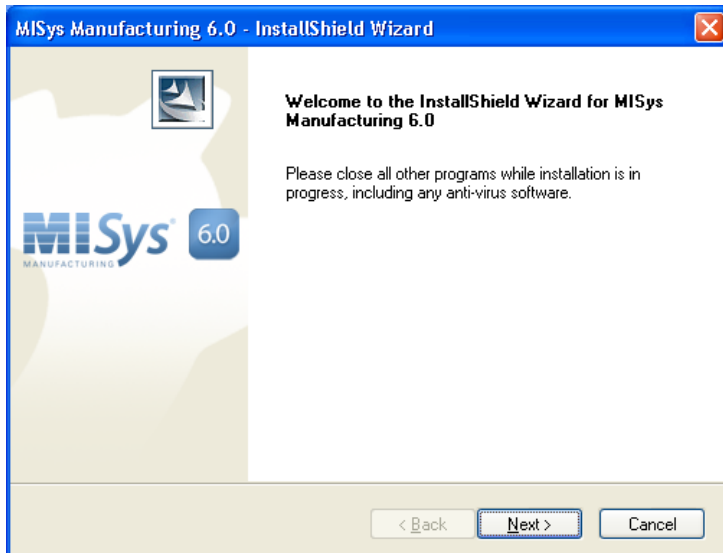
Special Note About Installing MISys Manufacturing on Windows Vista or Windows 7

For installations of the MISys Client or MISys Server on PCs running either 32 or 64-bit Windows Vista or Windows 7, we recommend installing MISys Manufacturing in a new folder you create at the root of the primary drive, and NOT installing in the default directory (usually ‘.\Program Files\...’). This will avoid any issues imposed by Windows Vista and Windows 7 UAC (User Access Control) limitations for modifying files in sub-directories of the standard Windows ‘Program Files’ directory. You will need to use the MISys Manufacturing custom installation options to be able to change the default installation directory.

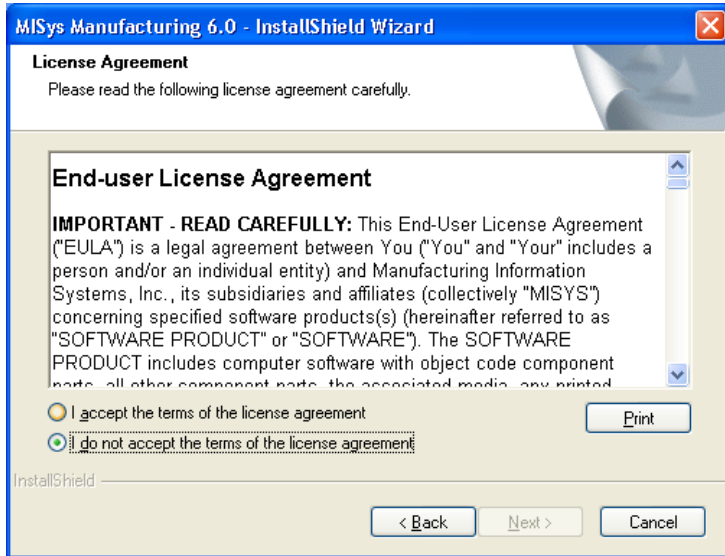
Shortly after launching the MISys Manufacturing Installation program, a window similar to the following will open:



Extraction of the MISys Manufacturing 6.0 Setup programs takes a few minutes. Please be patient. When the process is complete, the following window will appear:

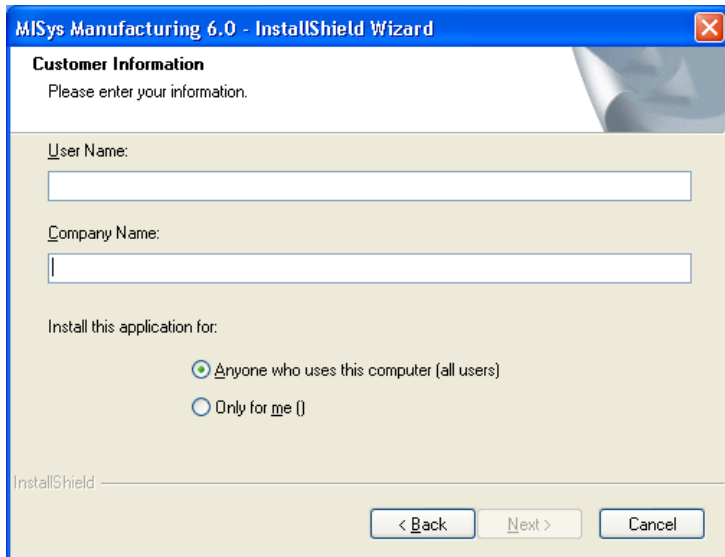


Click the **Next** button and the MISys Manufacturing End User License window will appear:



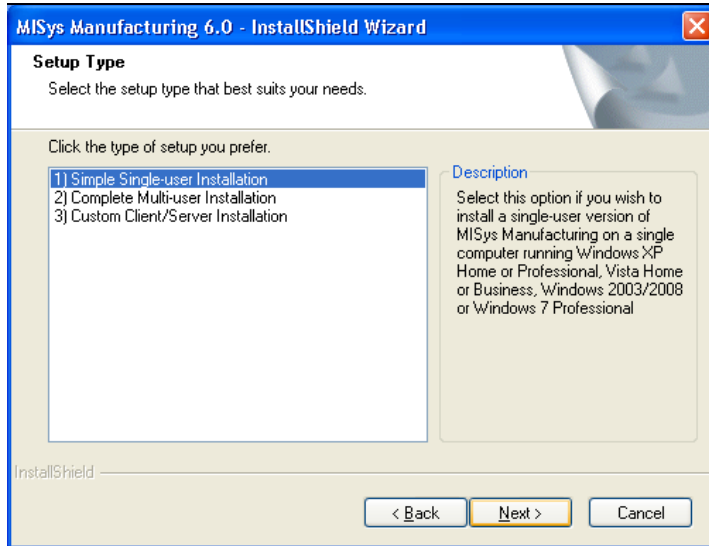
Please read the MISys End-user License Agreement (EULA) carefully. If you do not accept its terms, click **Cancel** to terminate the installation of MISys Manufacturing.

If you accept the terms of the EULA, click the radio button to acknowledge your acceptance, then click the **Next** button. The following window will open:



Unless you have a specific reason for doing otherwise, we recommend that you select the option to install this application for anyone who uses this computer (all users).

Enter your User Name and Company Name in the fields provided and click the **Next** button. The Setup Type window will appear as follows:



Option 1: Simple Single-user Installation

Select this option if you wish to install a single-user version of MISys Manufacturing on a single computer running XP Home, XP Professional, Vista, or Windows 7. This option installs all four components of MISys on the same computer. The benefit of this installation option is that it does not require Microsoft Internet Information Services (IIS). However, this limits you to running in single-user mode.



If you select the Simple Single-user Installation option now and wish to upgrade to a Multi-user installation later, you can do so by uninstalling MISys Manufacturing and reinstalling it.

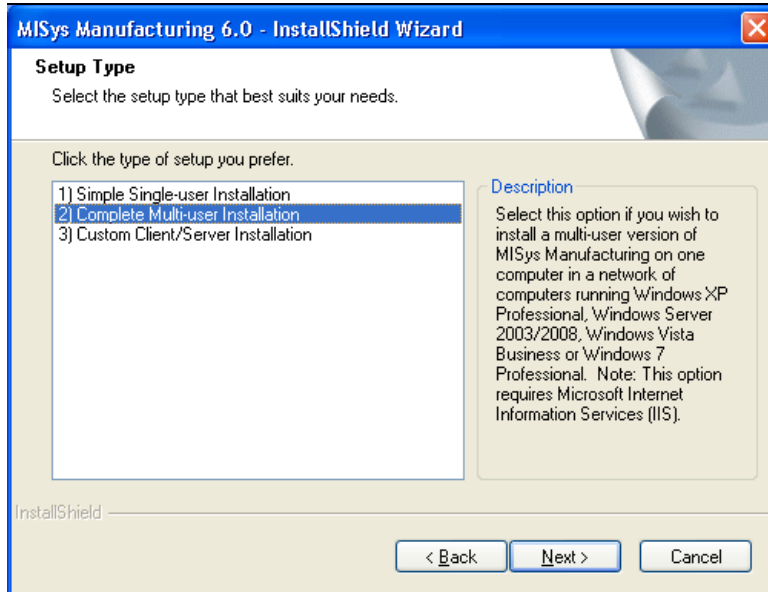
Click to select option **1) Simple Single-user Installation**, then click the **Next** button.

Option 2: Complete Multi-user Installation

Select this option if you wish to install a multi-user version of MISys Manufacturing on a computer designated as the MISys Server with the default settings.



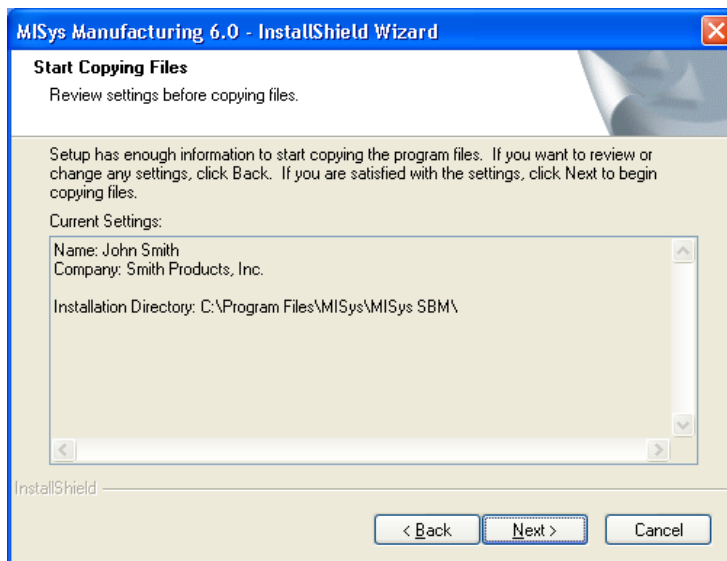
The computer designated at the MISys Server must be running Windows XP Professional, Windows 7 Professional, Windows Server 2003, or Windows Server 2008 with Internet Information Services (IIS).



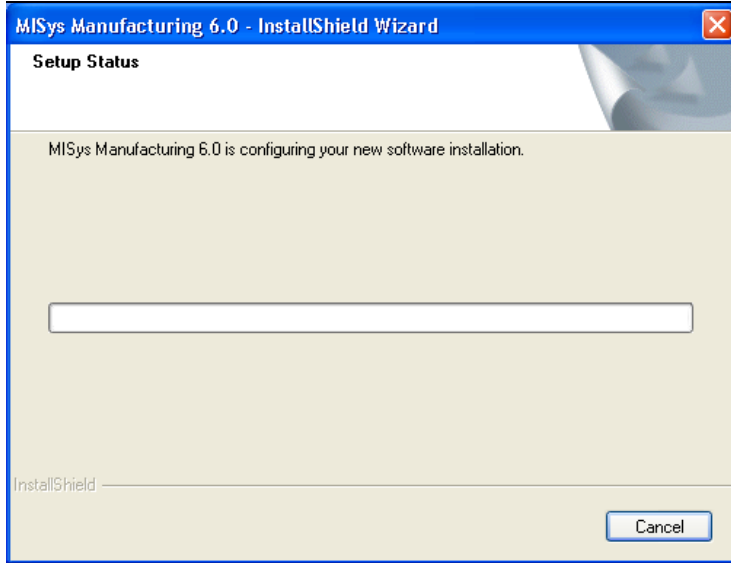
If you wish to use an existing database server, or wish to install MISys Manufacturing in a non-default folder, you should use the Custom installation option.

Click to select option **2) Complete Multi-user Installation**, then click the **Next** button.

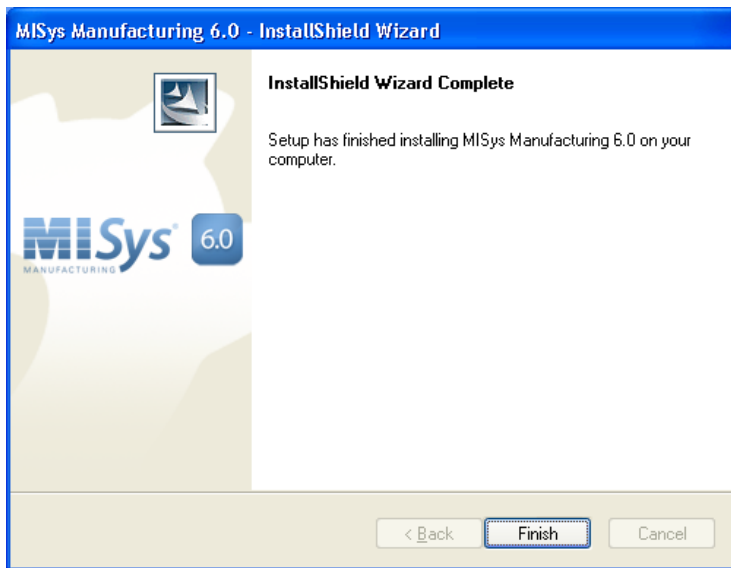
Whether you select **1) Simple Single-user Installation** or **2) Complete Multi-user Installation**, the following window will appear so you can review the choices you have made for installing MISys Manufacturing on your computer:



If you wish to proceed with the installation as indicated, click the **Next** button. When you do, the various components of the MISys Manufacturing package will be installed on your computer's hard drive.



When all the components of the MISys Manufacturing System are installed, the following window appears:



Click the **Finish** button to close the window and return to the Windows desktop.

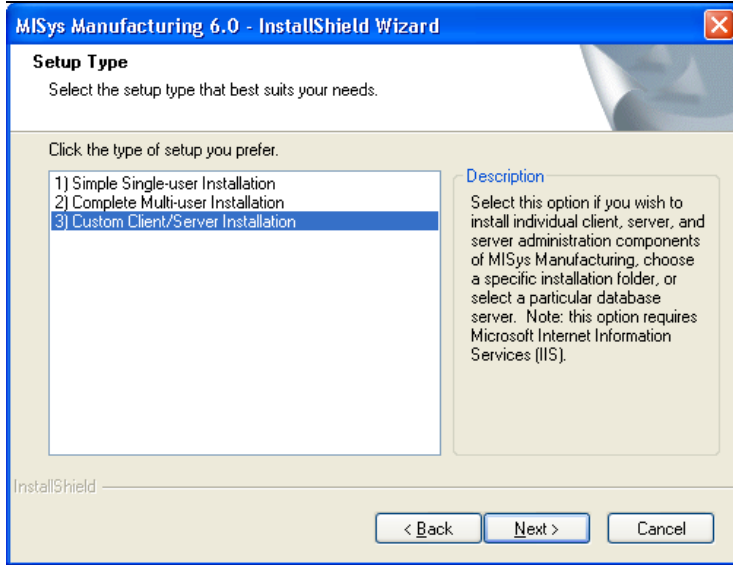
Option 3: Custom Client/Server Installation

If you wish to deploy MISys Manufacturing with some computers functioning as client workstations, another computer functioning as a server, and possibly another computer running the MISys Server Administration component, the installation program will allow you to pick and choose which components you wish to install on any given computer.

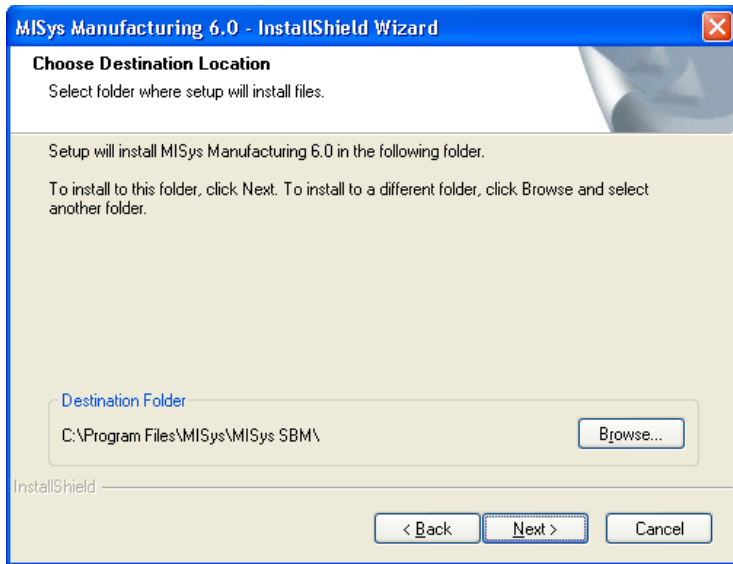


MISys Server module requires Microsoft Internet Information Services (IIS).

After launching the MISys Manufacturing Installer, start the installation as described above until you reach the Setup Type window:

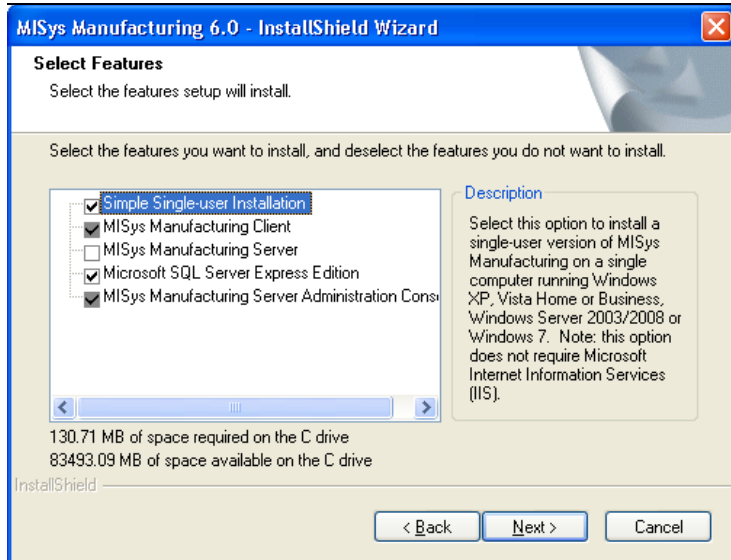


Click to select option **3) Custom Client/Server Installation**, then click the **Next** button. The Destination Location window will open as follows:



By default, the MISys Manufacturing System program modules are installed in the folder named C:\Program Files\MISys\MISys SBM\. Click the **Browse** button and change this folder only if you are certain of what you are doing.

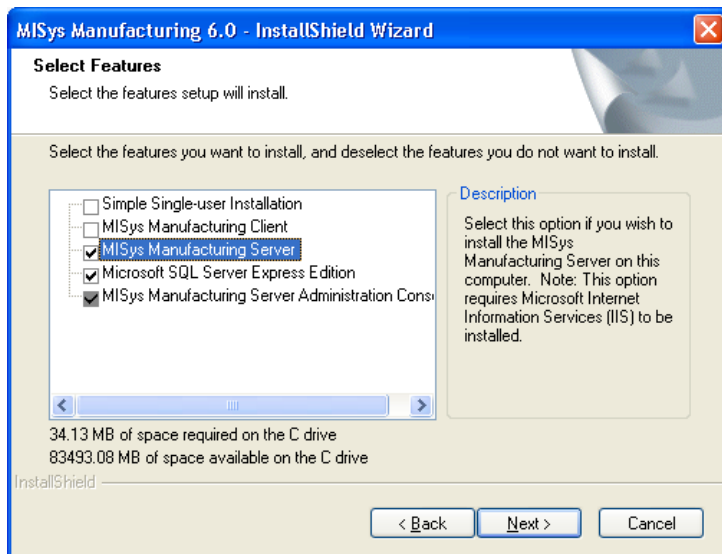
Click the **Next** button to proceed to the Select Features window:




To choose the components you wish to install, follow these steps:

Install the MISys Server Component

Start by installing the MISys Server component on your network server. Since you do not need the MISys Client modules on your server, clear the checks from these boxes, leaving only the checks for MISys Server, Microsoft SQL Server Express Edition, and MISys Server Administration Console.

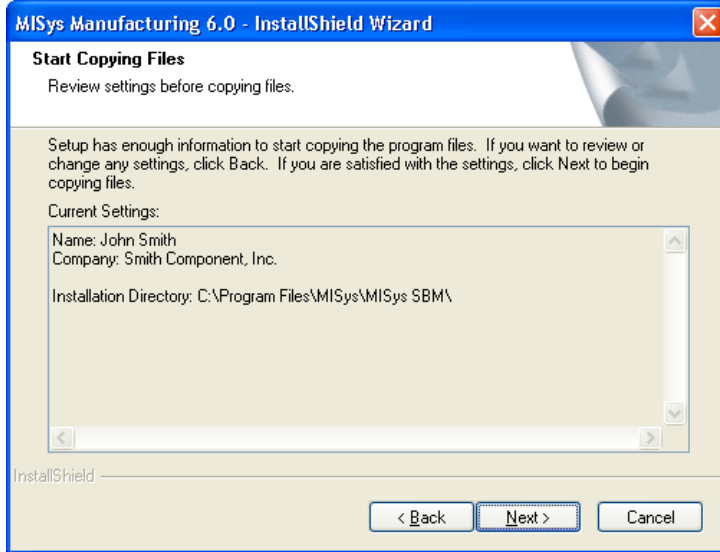


 When installing a multi-user version of MISys Manufacturing, you must first install the MISys Server component on your network server. Once the server is set up, you can proceed to set up each client workstation.

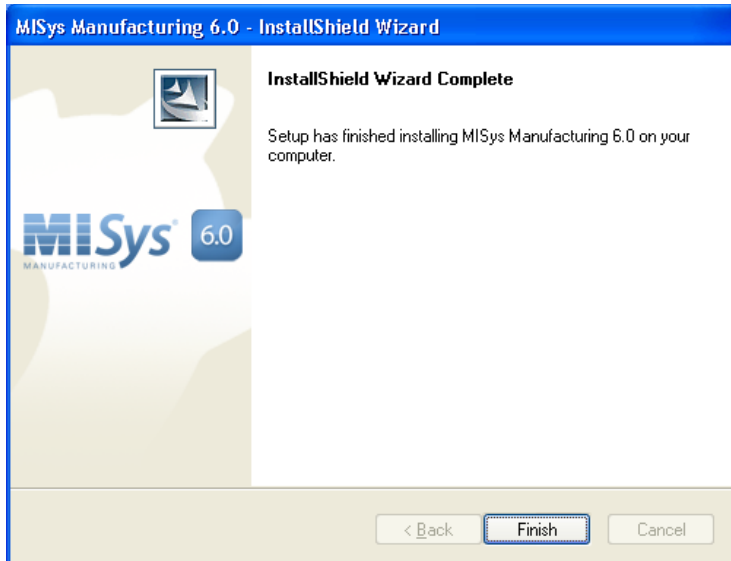
 The MISys Manufacturing Server Administration Console is an optional component that you should install on the network server. You will need the console to make backups and perform other maintenance on your system.

When you are ready to proceed, click the **Next** button.

When the following window appears, review the choices you have made for installing the MISys Server on your computer.



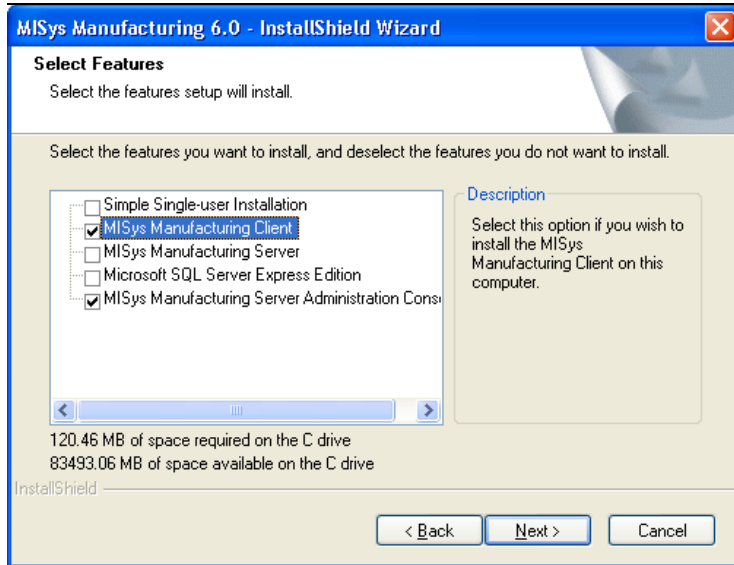
If you wish to proceed with the installation as indicated, click the **Next** button. When you do, the various components of the MISys Server component will be installed on your computer's hard drive. There is nothing else you need to do until the following window appears:



Click the **Finish** button to close the window and return to the Windows desktop.

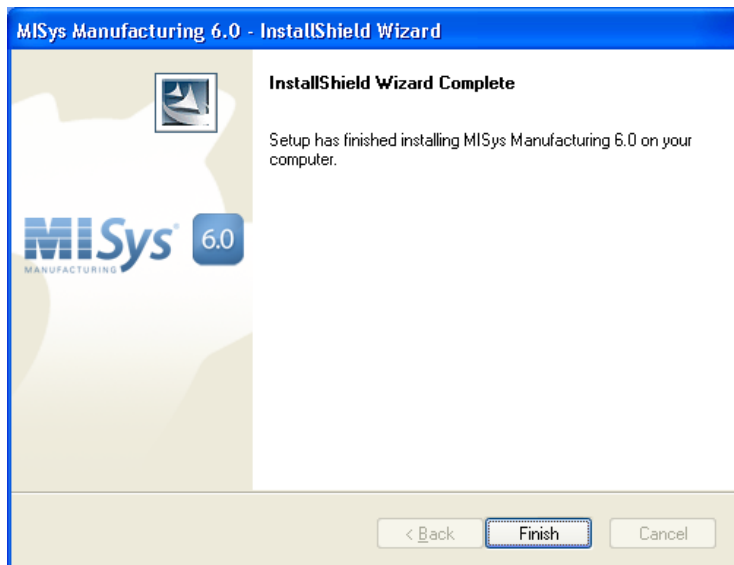
MISys Manufacturing Client

If you are installing MISys Manufacturing on a client computer, you do not need the MISys Server, Server Administration, or Microsoft SQL Server Express database engine components, so clear the checks from these boxes.



The MISys Manufacturing Server Administration Console is an optional component that you may, or may not, wish to have installed on the client computer. When in doubt, install it anyway. When you are ready to proceed, click the **Next** button.

There is nothing else you need to do until the following window appears:



Click the **Finish** button to close the window and return to the Windows desktop.

Repeat the installation on the MISys Client on each computer you wish to function as a MISys Manufacturing client workstation.

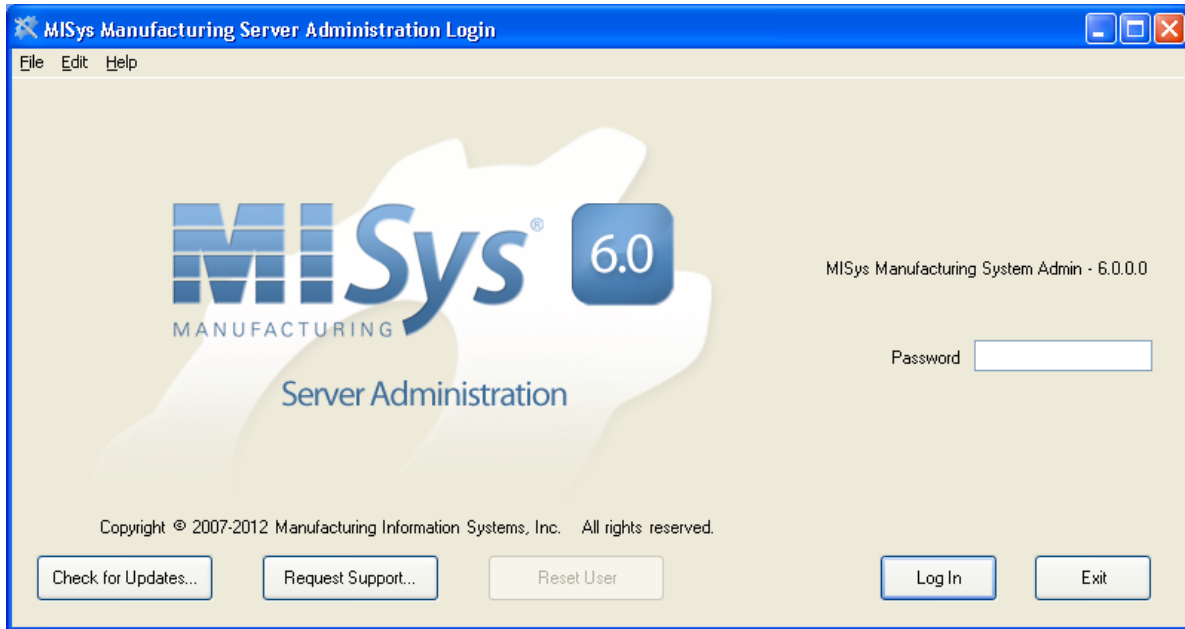
Re-establish the MISys Manufacturing Client Connection

Once you have completed the installation of MISys Manufacturing on the server, visit one of the client computers, start the MISys Client and re-establish the connection to the MISys Server.

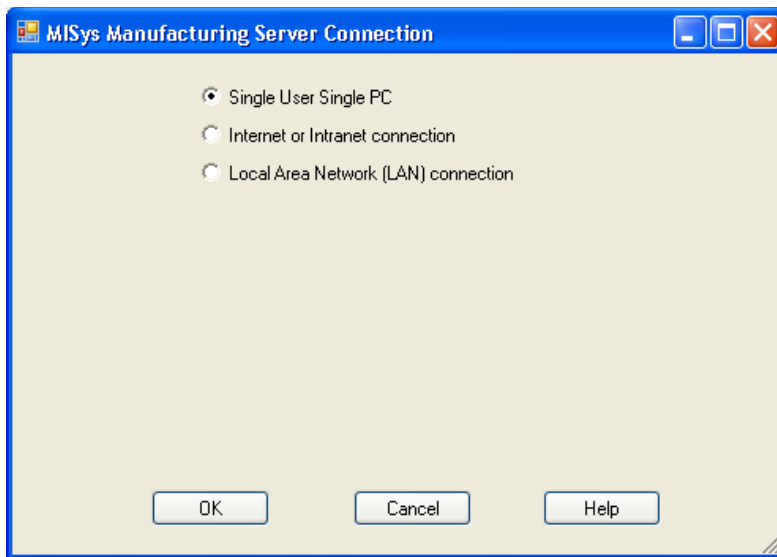


Refer to the note you made regarding the MISys SBM v5.0 client connection.

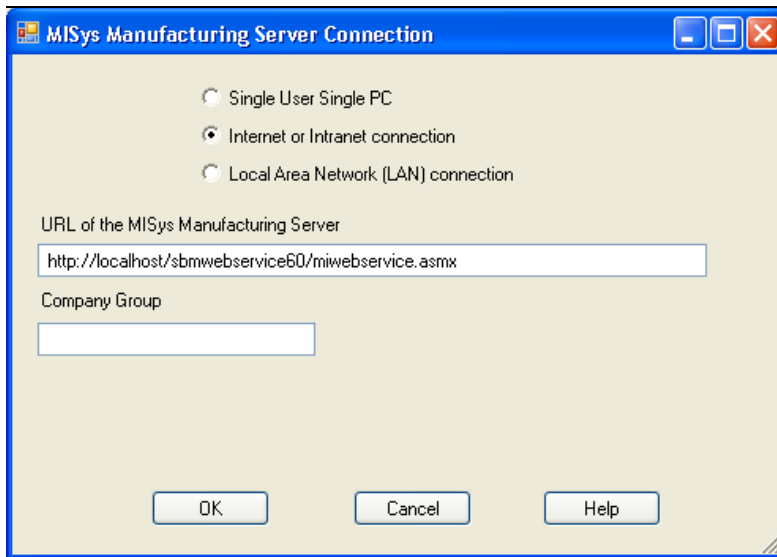
Double-click the MISys Manufacturing 6.0 Client icon to open the Login window:



In the menu bar click on **Edit | Server Connection** to open the Server Connection window as follows:



- If you have deployed MISys Manufacturing on a single computer, then the default setting of Single User Single PC is correct. Just click **OK** to close the window.
- If you have deployed MISys Manufacturing over the Internet or a company intranet, click to select that option and the Server Connection window will appear as follows:



Enter the URL of the MISys Server then click **OK** to close the window.



If you are not certain of this entry, it may help to refer to the note you made of the server connection for version 5.0. The URL is probably the same.



The Company Group field is normally blank. It is only used if the MISys Manufacturing Server you are connecting to is provided by a Hosting Service instead of an installation your own company's network. Consult your network administrator if using a hosting provider and they will provide the correct group name to enter for the Company Group field.

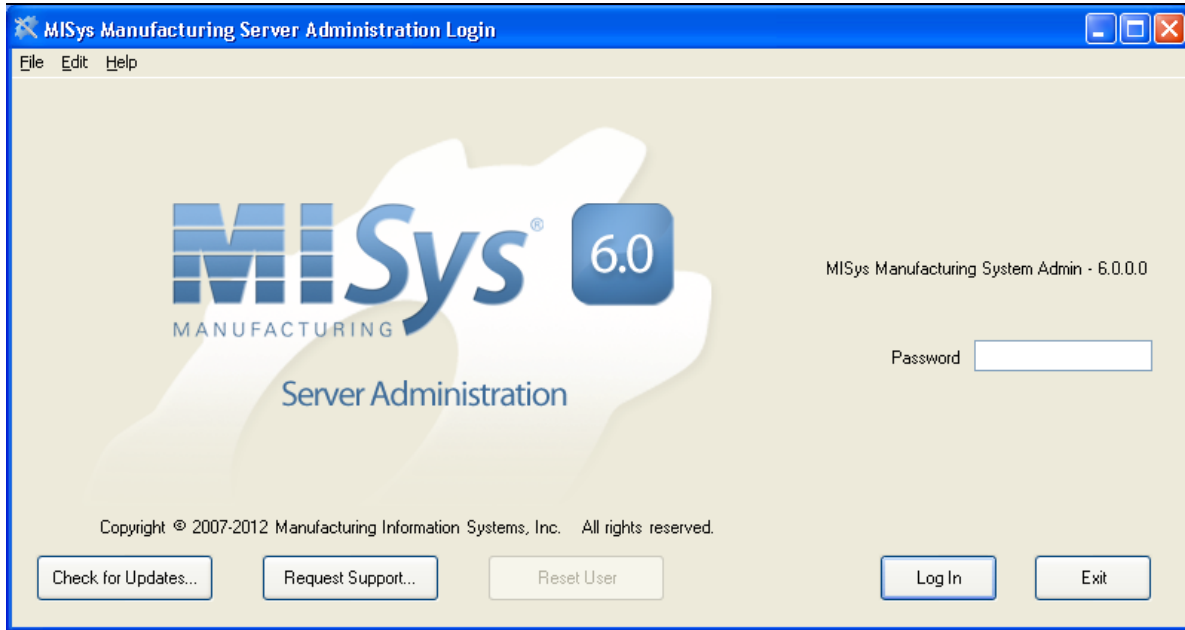
Test the MISys Manufacturing Client Connection

Before you go on to other client computers, test the connection by logging into the MISys Client. If you are successful and can access your familiar data, make a note of the server connection string and repeat the process with all the other client computers.

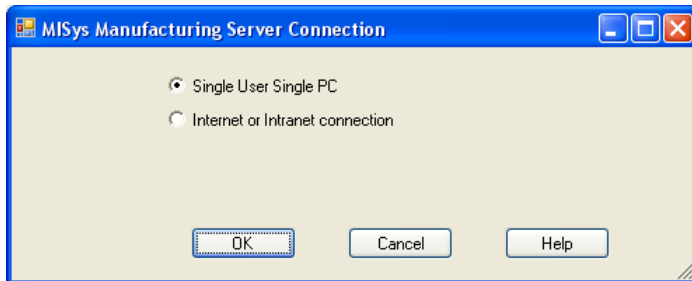
Re-establish the MISys Manufacturing Server Administration Connection

Next visit one of the computers on which you installed the MISys Manufacturing Server Administration Console and re-establish its connection to the MISys Server.

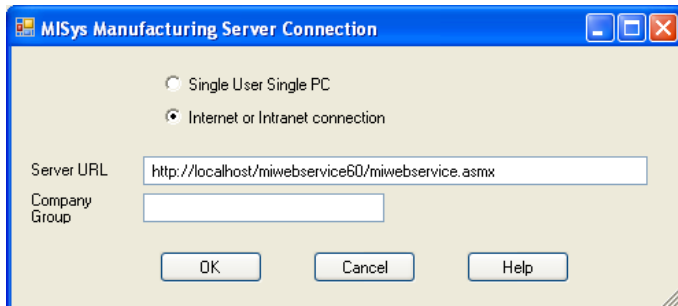
Double-click the MISys Manufacturing 6.0 Server Admin icon to open the Login window:



In the menu bar click on **Edit | Server Connection** to open the Server Connection window as follows:



- If you have deployed MISys Manufacturing on a single computer, then the default setting of Single User Single PC is correct. Just click **OK** to close the window.
- If you have deployed MISys Manufacturing over the Internet or a company intranet, click to select that option and the Server Connection window as will appear as follows:



Enter the URL of the MISys Server then click **OK** to close the window.



If you are not certain of this entry, it may help to refer to the note you made of the server connection for version 5.0. The URL is probably the same.



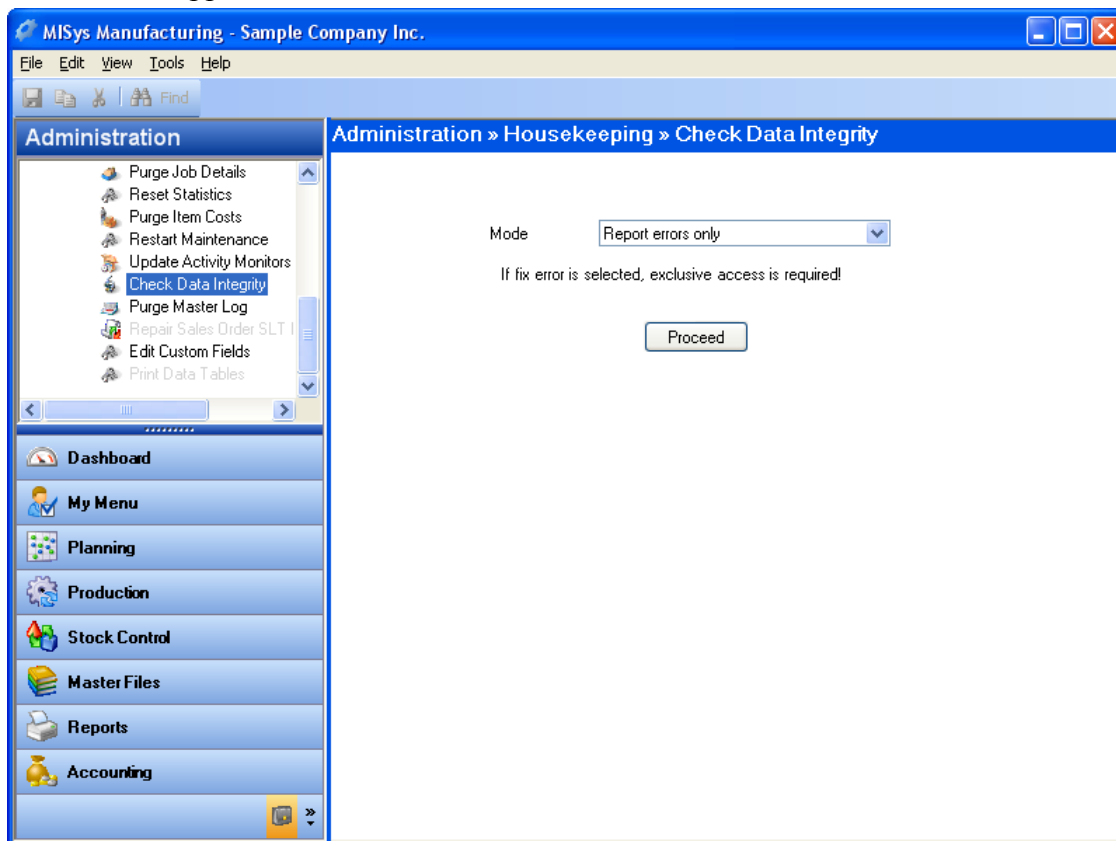
The Company Group field is normally blank. It is only used if the MISys Manufacturing Server you are connecting to is provided by a Hosting Service instead of an installation on your own company's network. Consult your network administrator if using a hosting provider and they will provide the correct group name to enter for the Company Group field.

Test the MISys Manufacturing Administration Console Connection

Before you go on to other client computers, test the connection by logging into the MISys Manufacturing Administration Console. If you are successful and can access your familiar data, make a note of the server connection string and repeat the process with all the other client computers.

Check the Integrity of Your Converted Data

When you start MISys Manufacturing version 6.0 for the first time, navigate to the Administration desktop. Select **Housekeeping | Check Data Integrity** and the following window will appear:



Click the **Proceed** button to start the check function. If any errors are reported, change the mode to **Report and Fix Minor Errors** and repeat the process. If errors persist, please contact MISys Technical Support.

Requesting Installation Assistance

If you need assistance with the installation of MISys Manufacturing version 6.0, click the **Request Support** button when you reach the Client Login window.

If you cannot open the Client Login window, please email installsupport@misysinc.com or call (802) 457-4700. Our support technicians, who work from 9am to 5pm weekdays (except holidays) will respond to your request promptly.